



ANNUAL REPORT

2022-23

<https://merf-pakistan.org>



Table of Contents

ABOUT MERF	2
Mission	2
Vision	2
Strategic Goals.....	2
Message from Chief Executive Officer	3
Geographical Presence.....	4
Our Partners in Success.....	4
Our Thematic Areas.....	5
HEALTH	7
Hospital Services in Newly Merged Districts (NMDs) in 02 DHQ and 05 THQ Hospitals - on Public Private Partnership Basis.....	8
Management and operations of 7 hospitals in Sindh on Public Private Partnership Basis.....	9
Management of 15 Health Facilities in Peshawar supported by Bill & Melinda Gates Foundation	10
Government General Hospital, Nishtarabad Peshawar under KPHCIP supported by the World Bank.....	11
NUTRITION.....	12
Stunting Prevention in Balochistan under Benazir Nashonuma Program.....	13
EU Programme for Improved Nutrition in Sindh (PINS) - Nutrition Stabilization Centers	14
Nutrition Emergency Response in Flood Affected Districts of Sindh funded by UNICEF	14
Nutrition Integrated Flood and Calamity Hit Response in Districts of Balochistan funded by UNICEF.....	15
EMERGENCY RESPONSE.....	16
Pakistan floods 2022 - Emergency Response:	17
General Food Distribution supported by World Food Programme	17
Humanitarian Action (Medical Camps) for the Flood Affected Communities of Balochistan supported by SIDA/IRC.....	18
Medical Camps and Rehabilitation of Health Facilities supported by ECHO/IRC	18
Medical Camps in KP.....	18
Cash Based Transfers (CBT) for flood affected families of Balochistan funded by WFP	19
Integrated Humanitarian Assistance for Vulnerable Afghan Refugees and Emergency affected population (I-HAVE) in Balochistan and Sindh funded by ECHO through IRC.....	20
Nutrition Promotion, Preventive & Community level treatment services in flood affected districts of Punjab (DG Khan and Rajanpur) funded by UNICEF:.....	21
Targeted Supplementary Feeding Programme in Dadu and Qambar Shahdaskot of Sindh funded by WFP	21
RESEARCH & STUDIES	22
Home based Workers Survey in Balochistan:.....	23
Long Lasting Insecticidal Nets (LLINs) Mass Distribution in 14 district of Pakistan for Malaria Prevention 2022...23	
OUR TEAM	24
The Leadership	24
financial portfolio	25
AUDIT REPORT 2022-23	25



ABOUT MERF

MERF was established in 2015 as not-for-profit organization under section 42 of Companies Act 2017. Working in four provinces, KP (19 districts), Balochistan (10 districts), Sindh (03 districts) and Punjab. Since 2015, MERF has been serving the underprivileged people of Pakistan through provision of services in the areas of Nutrition, WASH, Emergency Response, Research, Surveys and Distribution, Risk communication and community engagement, Health trainings. Our country program comprising of dedicated experts is always striving to assuage the sufferings of the most marginalized and vulnerable segments of society.

MISSION

Saving lives by providing effective, efficient and affordable healthcare in resource poor settings

VISION

MERF aims to improve access to quality health care services which are equitable, efficient and affordable in collaboration with governments,

international organizations and private entities. MERF provides services in health care delivery, capacity building of health workers, health care governance, supply chain management, health management information system and health care policy and planning in order to positively contribute to the health status of the population

STRATEGIC GOALS

- To support public health care system with special emphasis on maximizing access to a basic package of quality essential healthcare services.
- To improve nutritional status of population through nutrition specific and nutrition sensitive interventions.
- To prevent and/or mitigate water, sanitation and hygiene related diseases through evidence based systematic approaches.
- To deliver emergency services and develop resilience in response to natural and man-made disasters.
- To develop and advocate policies for health systems strengthening.

MESSAGE FROM CHIEF EXECUTIVE OFFICER

The tenure of 2022-23 has been difficult and full of challenges. We are extremely grateful to our donors for continuing to support those in need despite the desperate political and economic situation in Pakistan. We were able to continue our development work during these challenging times due to the commitment of our organization to wellbeing of poor and underprivileged people of Pakistan. Through the hard work and dedicated efforts of our teams and volunteers on the ground, we have been able to accomplish our objectives successfully.

MERF in collaboration with KP health department and KP Health Foundation is operating 7 hospitals on public private partnership basis in Newly Merged Districts (NMDs). MERF is providing free of cost services in these hospitals with responsibility of management and provision of secondary health services to the general public.



Through our Covid response we reached out to the poorest and hard to reach communities in rural areas and sensitized them on the importance of vaccines. MERF has been managing specialized hospital in Nishtarabad, Peshawar since June 2020. This is a dedicated COVID 19 hospital that is providing specialized COVID-19 related services to patients from all across the province. It was converted to a general hospital in October 2022 with funding from World Bank.

The floods of 2022 focused all our efforts towards nutrition emergencies. MERF in collaboration with World Food Programme has implemented Benazir Nashonuma Stunting Prevention Programme in 14 districts of Balochistan.

With financial support of UNICEF, our organization has implemented Nutrition Integrated Flood and Calamity Hit Response project in 4 districts of Balochistan and Nutrition Promotion, Prevention & Community Level Treatment Services in Flood Affected Districts Rajanpur and DG Khan of Punjab.

MERF with support from European Civil Protection and Humanitarian Aid Operations (ECHO), and International Rescue Committee (IRC), is providing comprehensive emergency obstetric care, emergency referrals, and nutrition services to locals and Afghan refugees in the far flung districts of Chaman, Killa Abdullah, Jhal Magsi and Noushki of Balochistan.

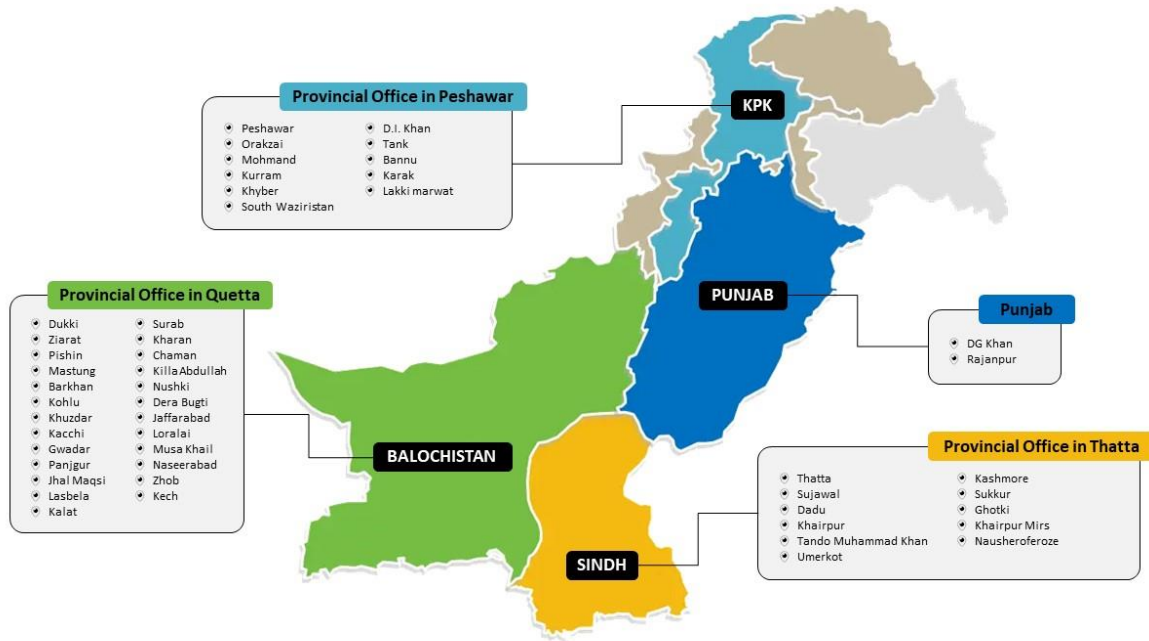
MERF in partnership with the Directorate of Malaria Control- DoMC, Indus Hospital and Health Network (IHHN) has conducted a mass distribution campaign of Long-Lasting Insecticidal Nets (LLIN) in 18 targeted districts of Balochistan, 2 districts in Khyber Pakhtunkhwa and one in Sindh.

*During 2022-23 of this report period MERF reached out to over **10 million beneficiaries** across all four provinces of Pakistan.*

In view of the economic situation prevalent in Pakistan we understand that this is a challenging time for health sector, but together we will come out of it with a renewed determination to work even harder to attain our objectives. We will continue working alongside communities to meet their needs by complementing our mission of saving lives by providing effective, efficient and affordable healthcare in resource poor settings.

Syed Shah Miran
CEO – MERF

GEOGRAPHICAL PRESENCE



OUR PARTNERS IN SUCCESS



OUR THEMATIC AREAS

HEALTH

MERF focuses on strengthening the public health system to deliver quality integrated healthcare services that addresses the key burden of communicable & non-communicable diseases and problems related to the Maternal, Newborn and Child Healthcare. The major interventions that MERF implemented across its projects include;

- Providing essential curative and preventive services & through primary and secondary healthcare facilities through collaboration under Public – Private Partnerships
 - Providing necessary Human Resource (Specialists, Medical Doctors and Paramedical Staff)
-

NUTRITION

providing nutrition specific interventions that address the immediate determinants of maternal and child under nutrition. The key interventions include:

Community mobilization and screening of malnourished children and pregnant women

- Supplementary feeding program (SFP)
 - Outpatient therapeutic program (OTP)
 - Management Severe Acute Malnourished (SAM) cases in Stabilization Center
 - Promotion of infant and young child feeding practices, multi micro-nutrient supplementation and deworming
-

EMERGENCY RESPONSE

MERF Emergency Response always collaborative effort at field and facilities level are the core of all efforts during emergencies. MERF ensures that in case of any emergency like floods or epidemics, contingency plans are in place to control infectious diseases and other health issues of concern in emergencies - man made or natural. MERF response include:

- Emergency Medical camps
 - Nutrition in emergencies
 - Ration & livelihoods distributions
 - Cash for Work or Cash Based Transfers
-

WASH

WASH is essential for children and their families to live healthy lives. Typical diseases and conditions associated with lack of WASH include, diarrhea, malnutrition and stunting. Diarrhea and malnutrition are leading causes of child mortality and morbidity in Pakistan. MERF focuses on the following

- Provision of safe drinking water to communities, schools and healthcare facilities.
- Providing appropriate facilities for defecation including establishment of public latrines.
- Conducting awareness sessions on handwashing, use of latrines and importance of following other hygienic practices.



RESEACH & STUDIES

MERF has qualified professional and dedicated survey and research teams at the country office as well as at provincial level. This includes health experts, Bio statistician, M&E professional and sector specialist. The team holds hands on experience on SQUEAC, KAP and SMART surveys. Recently the team conducted NNS-17 survey in 11 districts of Balochistan and in 06 districts of KPK.

HRD FOR HEALTH

To enhance training and capacity building in healthcare system MERF has been working to train local staff in the most remote areas of the country. Midwifery courses, nursing diplomas and several other certifications and trainings are conducted to strengthen skills, knowledge and resources that increase from capacity building efforts.



HEALTH

HOSPITAL SERVICES IN NEWLY MERGED DISTRICTS (NMDs) IN 02 DHQ AND 05 THQ HOSPITALS - ON PUBLIC PRIVATE PARTNERSHIP BASIS

The Government of KP through KP health department and KP Health Foundation has taken the initiative of Health System Strengthening (HSS) by engaging private sector organizations on public private partnership basis in NMDs. MERF has made all the hospitals fully functional and is providing free of cost services including general and specialized OPD services, IPD services (Surgical, Medical, Pediatrics, Gynecology & Eye), A&E Services, OT services, Labor rooms, Diagnostic services, pharmacy and EPI services with responsibility of operationalization, management and provision of secondary health services to the general public. The hospitals include:

- Cat D Hospital, Bazar Zaka Khel, Khyber - Awarded in 2022
- DHQ Mishti Mela, Orakzai – Awarded in 2017
- DHQ Hospital, Wana, South Waziristan - Awarded in 2022
- Cat D Hospital, Mola Khan Sarai, S. Waziristan – Awarded in 2020
- Cat D Hospital, Ghiljo, Orakzai – Awarded in 2020
- Cat D Hospital, Dogar, Kurram– Awarded in 2020
- Cat D Hospital, Momad Gat, Mohmand – Awarded in 2020



410,371
OPD Consultations



349,986
Diagnostic Services



65,825
IPD Admissions



18,564
MNCH Services



2,368 children
vaccinated against
(Penta-III)



13,677
Surgeries



6,280
Institutional Deliveries



Deployed 26 specialists,
59 MOs, 227 paramedics
& 195 staff support staff



MANAGEMENT AND OPERATIONS OF 7 HOSPITALS IN SINDH ON PUBLIC PRIVATE PARTNERSHIP BASIS

MERF is working with Department of Health, Government of Sindh on Public Private Partnership Model where it is managing 13 health facilities (02 DHQs, 03 THQs hospitals & 08 RHCs) in District Thatta and Sujawal on Public – Private Partnership (PPP) model since 2016.

863,959
OPD Consultations



333,087
Diagnostic Services



68,394
IPD Admissions



42,214
MNCH Services



8,890 children received
the Penta-III vaccine



23,169
Surgeries



10,557
Institutional Deliveries



Deployed 39 specialists,
70 MOs, 120 paramedics
and 242 support staff



MANAGEMENT OF 15 HEALTH FACILITIES IN PESHAWAR SUPPORTED BY BILL & MELINDA GATES FOUNDATION

Under this project MERF operationalized 15 dispensaries in Khyber Pakhtunkhwa to provide free of cost primary & preventative care services to all patients. The facilities primarily focus on MNCH services - specifically antenatal care, deliveries, postnatal care, nutrition, and immunization services. The provision of this sort of integrated package of health services helps in reaching families that may otherwise refuse OPV during door-to-door polio vaccination campaigns, and will help boost routine immunization coverage in the communities in coverage area.

The project is benefitting the underserved & at-risk communities of the Super High Risk Union Councils (SHRUCs) in Peshawar.

Peshawar has historically been one of the core reservoirs for Poliovirus in Pakistan, and these SHRUCs are Peshawar's poorest areas, as is evident by high levels of childhood malnutrition and lower rates of immunization coverage prevalent in these areas. Prior to this intervention, dispensaries in these union councils were not operational and the local communities were suffering because of lack of other affordable options.



During the reporting period,
12,134 children were fully
vaccinated with Penta-3

Beneficiaries reached through
nutrition interventions= 83,367

GOVERNMENT GENERAL HOSPITAL, NISHTARABAD PESHAWAR UNDER KPHCIP SUPPORTED BY THE WORLD BANK

MERF has been managing specialized hospital in Nishtarabad since June 2020. This is a dedicated COVID 19 hospital that is providing specialized COVID 19 related services to patients from all across the province. It has been established by MERF with support of European Civil Protection and Humanitarian Aid Operations (ECHO) funding through International Rescue Committee (IRC) in June, 2021. The hospital has been equipped with latest medical equipment and has capacity of 100 beds with 50 beds for Isolation, 30 beds for HDU and 20 beds for ICU COVID 19 patients. The hospital is providing the following services,



- Quality Covid-19 Health services i.e. Isolation, High Dependency Unit & Intensive care unit for COVID-19 patients.
- COVID Vaccination services for the community.
- Establishment of state of the art Hepatology Unit to provide management services (diagnostic & treatment) for Hepatitis A, B & C.
- Establishment of CEmONC and Breast Cancer Screening Unit in the hospital
- Availability of skilled human resource, essential medicines, and functional equipment.
- Availability of Public Health lab, diagnostics, waste management, infection prevention & control, referral linkages with other hospitals and all necessary support services.

OPD Consultations

73644

Institutional deliveries

402

IPD Admissions

2557

Diagnostic services

141,256



NUTRITION

STUNTING PREVENTION IN BALOCHISTAN UNDER BENAZIR NASHONUMA PROGRAM

MERF is implementing Stunting Prevention Programme in 14 districts of Balochistan namely Barkhan, Dukki, Gwadar, Lasbela, Kalat, Surab, Jhal Magsi, Kacchi, Khuzdar, Kohlu, Mastung, Panjgur, Pishin and Ziarat under Benazir Nashonuma Stunting Prevention Programme supported by World Food Programme.

Through this Programme, BISP has designed a Conditional Cash Transfer intervention to increase the uptake of health and nutrition services by its beneficiaries through facilitation centers (FCs) established under the Programme. MERF is responsible for operationalization and management of FCs, ensuring provision of health and nutrition services to the beneficiary and outreach activities to ensure maximum coverage.



Total # of Screening Children & PLW'S = 15952

SAM Identified= 776

MAM Identified (Children + PLW's & Adolescent)= 2483

Total Registration= 36192

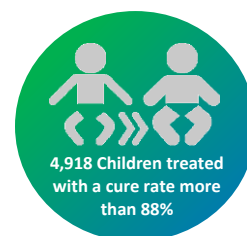
Total referrals= 32458

EU PROGRAMME FOR IMPROVED NUTRITION IN SINDH (PINS) - NUTRITION STABILIZATION CENTERS

MERF as IP of Action Against Hunger (ACF) is implementing EU PINS nutrition specific component in District Thatta and Sujawal and has established Nutrition Stabilization Centers in DHQ Hospital Makli, Thatta and THQ Hospital Sujawal. The objectives of the project are

- Treatment of Malnutrition
- Referral system for follow up of children
- IYCF for preventive work at facilities specially for children with MAM
- BCC for improved nutrition

NSC Admissions= 1080



NUTRITION EMERGENCY RESPONSE IN FLOOD AFFECTED DISTRICTS OF SINDH FUNDED BY UNICEF

This recent project in districts of Dadu ,Qamber Shahdadt, Badin, Thatta, Sujawal , Jacobabad and Kashmore in Sindh have been outlined to improve the access of severely malnourished children to life saving interventions through implementation of simplified approaches for wasting management and to avert the compromised nutritional status besides improving the access of vulnerable children (boys and girls), adolescent girls and PLW to nutritional supplements and information needed to preclude the risks associated with malnutrition.

Total no of screened children & PLWs = 112199

SAM identified= 4730

No of Children who received MNP= 30963

MAM Identified (Children + PLWs & Adolescent) = 13154

No of PLWs who received MNT & IFA= 73082

of Awareness Sessions Participants= 140542

Total Support Groups (MSG/FSG/BBC) established= 441



NUTRITION INTEGRATED FLOOD AND CALAMITY HIT RESPONSE IN DISTRICTS OF BALOCHISTAN FUNDED BY UNICEF

The project incepted in districts Jhal Magsi, Khuzdar, Pishin, and Kacchi in Balochistan is focused on already prevailing malnutrition issue that has become severe due to floods and remote locations in province. The primary objective of the project intervention is to engage communities in enhancing the accessibility and utilization of specialized nutrition services aimed at saving lives. This will be achieved through a mobile outreach program targeting individuals affected by floods across 137 union councils in four districts: Jhal Magsi, Khuzdar, Pishin, and Kacchi, all situated in Balochistan. The proposed nutrition-focused interventions intend to serve a substantial population.

No of PLWs who received MNT & IFA= 814742

Total no of screened children & PLWs = 126578

No of Awareness session participants= 46,674



EMERGENCY RESPONSE

PAKISTAN FLOODS 2022 - EMERGENCY RESPONSE:

Pakistan has received unprecedented monsoon rainfall since the start of the monsoon season. Heavy rains have resulted in urban and flash floods, landslides, and Glacial Lake Outburst Floods (GLOF) across Pakistan, particularly affecting Balochistan, Khyber Pakhtunkhwa, and Sindh provinces.

Nationwide, 80 districts have been officially notified as 'calamity hit' – 31 in Balochistan, 23 in Sindh, 17 in KP, six in GB and three in Punjab. Many more districts without an official declaration are also reportedly impacted. Around 33 million people have been affected by the heavy rains and flooding, according to the National Disaster Management Authority (NDMA). 637,000 people are living in relief camps, while many more are displaced and being hosted by other households (OCHA-06 September 2022).

MERF immediately started responding to the emergency and activated its emergency response protocols. MERF is responding to Floods Emergency in the following way;



GENERAL FOOD DISTRIBUTION SUPPORTED BY WORLD FOOD PROGRAMME

The project aimed to support affected populations of district Lasbela and Pishin during the early recovery phase by addressing food insecurity and helping to rebuild livelihoods in the aftermath of both man-made and natural disasters.

DISTRICT	NUMBER OF BENEFICIARIES
LASBELA	11,000
PISHIN	2,993



HUMANITARIAN ACTION (MEDICAL CAMPS) FOR THE FLOOD AFFECTED COMMUNITIES OF BALOCHISTAN SUPPORTED BY SIDA/IRC

Under this project, medical camps were set up to offer healthcare and nutrition services to the flood affected population of target districts. In both target districts (Nushki and Lasbela) total 24 medical camps were organised at target locations jointly identified by department of health and MERF provincial team.

6573 individuals including 3969 females and 2604 males benefitted through medical consultation, counselling and provision of medicine.

In Nushki total 2447 individuals including 1448 females and 999 males were benefitted

In Lasbela total 4126 individuals including 2521 females and 1605 males were benefitted. The proportion of women and children benefitted was more than 70%

MEDICAL CAMPS AND REHABILITATION OF HEALTH FACILITIES SUPPORTED BY ECHO/IRC

In both target districts (Nushki and Jhal Magsi) total 24 medical camps were organised at target locations jointly identified by department of health and MERF provincial team.

8835 individuals in both districts (Nushki: 5196, Jhal Magsi: 3639), among 55% were females' beneficiaries (4771 out of 8735) through medical consultation, counselling and provision of medicine

In Nushki total 5196 individuals including 2892 females and 2304 males were benefitted while in Jhal Magsi among 3639 individuals 1979 females and 1660 males were benefitted. The proportion of women and children benefitted was more than 67%.

MEDICAL CAMPS IN KP



29,300

People Reached



15,308

Patients Treated through 48 Medical Camps



13,993

Food Distribution Beneficiaries



CASH BASED TRANSFERS (CBT) FOR FLOOD AFFECTED FAMILIES OF BALOCHISTAN FUNDED BY WFP

The project aimed to improve the food security and livelihoods of flood-affected communities by restoring their livelihoods and enhancing resilience through agricultural support and community infrastructure development. It provided assistance to 17,000 households in Naseerabad and Kachhi districts of Balochistan province. The project focused on providing cash assistance to these individuals, recognizing the diverse needs within the affected population. Two cycles of PKR 12,000 each were disbursed to the beneficiaries who actively participated in community and rehabilitation works. The nature of the work included cleaning water channels, constructing protection walls, and maintaining bridges, contributing to both the immediate relief and long-term resilience of the community.



A total of 7,985 people were registered for CBT

6,109 people received Cash for Work

The beneficiaries were strategically identified and selected based on gender, age, and vulnerability, ensuring that the project addressed the specific needs of women, men, boys, girls, elderly individuals, and persons with disabilities. The breakdown of beneficiaries by demographic category is as follows:

- Men Beneficiaries: 6,124
- Women Beneficiaries: 1,654
- Elderly Beneficiaries (over 60 years): 324
- PWD Beneficiaries: 171



Naseerabad: The community/rehab works under cash for work is being implemented

INTEGRATED HUMANITARIAN ASSISTANCE FOR VULNERABLE AFGHAN REFUGEES AND EMERGENCY AFFECTED POPULATION (I-HAVE) IN BALOCHISTAN AND SINDH FUNDED BY ECHO THROUGH IRC

MERF, with support from European Civil Protection and Humanitarian Aid Operations (ECHO) and International Rescue Committee (IRC), is providing comprehensive emergency obstetric care, emergency referrals, and nutrition services in the far flung districts of Chaman, Killa Abdullah, Jhal Magsi and Nushki of Balochistan. The purpose of this project is to facilitate people of these targeted districts in both the provinces through providing cash assistance, child protection and psychosocial support for prevention of Gender Based Violence (GBV). This MR will extend lifesaving and early recovery assistance to flood affected communities (both Afghan refugees and host communities fulfilling the criteria) through integrated protection, health, Cash for Work (CfW) and education services in Khairpur and Dadu in Sindh. Under this intervention the following activities were conducted,

- Identification and screening of children as SAM or MAM
- Administration of BMG dose and Penta-3.
- IYCF and maternal nutrition sessions.



The intervention is aligned with IRC's recent Early Recovery Needs Identification (ERNI) findings. Response interventions are prioritized by the National and PDMA's and Global Humanitarian Standards (Sphere standards, IASC MHPSS, GBV, INEE and Child Protection Minimum Standards).



219,069

ECHO- I HAVE Balochistan

Total no of screened children & PLW= 38891

SAM Identified= 23142

OPD consultations= 174029

Total beneficiaries of MNCH services= 13039

No of children who received BCG dose and Penta-3= 3688

ECHO- I HAVE Sindh

Total no of screened children & PLW= 2671

SAM Identified= 177

Total beneficiaries of OPD Consultations= 24160

Total beneficiaries of MNCH Services= 2623

MAM Identified (Children + PLW & Adolescent) = 227

No of children who received BCG dose and Penta-3= 815

NUTRITION PROMOTION, PREVENTIVE & COMMUNITY LEVEL TREATMENT SERVICES IN FLOOD AFFECTED DISTRICTS OF PUNJAB (DG KHAN AND RAJANPUR) FUNDED BY UNICEF :

In collaboration with UNICEF and IRMNCH Punjab, MERF delivered nutrition services aimed at enhancing the wellbeing of mothers and children in specific districts of Punjab. This was achieved through a comprehensive approach encompassing prevention, timely identification, treatment, and effective handling of malnutrition.

Total no of screened children & PLW= 366287

SAM Identified= 8604

MAM Identified (Children + PLW & Adolescent) = 14616

No of SAM children who received RUTF= 7212

No of Children who received MNP= 10803

No of PLW who received MNT & IFA= 78083

No of Awareness Sessions Participants= 186375

Total SAM/ MAM Cured= 3968

TARGETED SUPPLEMENTARY FEEDING PROGRAMME IN DADU AND QAMBAR SHAHDADKOT OF SINDH FUNDED BY WFP

The overall purpose of this humanitarian response focusing on nutrition is to contribute towards reducing maternal and child mortality, morbidity and disability with improved access to life saving nutrition services including therapeutic food, and to ensure enhanced community engagement for gender responsive nutrition mainstreaming in flood affected target districts of Sindh



46,418 beneficiaries including 12,838 boys, 14,816 girls and 18,764 PLWs

69,051 people benefitted through 3836 nutrition sessions

Mother and Father Support Groups established = 241

11,152 PBWs and 18,663 children under the age of five were discharged from the program as cured



RESEARCH & STUDIES

HOME BASED WORKERS SURVEY IN BALOCHISTAN:

Medical Emergency Resilience Foundation (MERF) with support of World Bank in coordination with the concerned department of Government of Balochistan has conducted survey to assess exact conditions and work situations of the home-based workers for further policy and law making. The scope of the data collection efforts was focused on two districts Quetta and Kharan in Balochistan province. Data was collected from the selected HHs using structure questionnaire. The results were as follows:

Home based workers HHs= 3997

Quetta target=2565

Kharan target=1432



LONG LASTING INSECTICIDAL NETS (LLINS) MASS DISTRIBUTION IN 14 DISTRICT OF PAKISTAN FOR MALARIA PREVENTION 2022

MERF, in collaboration with Indus Hospital and Health networks (IHHN) and Directorate of Malaria Control (DoMC), with funding support from Global Fund, implemented a massive campaign to prevent malaria through distribution of bed nets to rural communities across 17 districts (5 x flood and 12 campaign) of KP and Balochistan. 5.15 million beneficiaries were reached through distribution of 2,925,641 bed nets to rural communities across 17 districts of Balochistan and KP. SBCC activities played a key role in ensuring accurate and consistent messaging across all phases about use, care and repurposing of bed nets.



5.15 million beneficiaries were reached through distribution of 2,925,641 bed nets to rural communities

No of household registered= 1,129,285

OUR TEAM

MERF has a dynamic and vibrant team of professionals led by leadership with decades of experience and expertise in humanitarian and development sectors in public health, hospital management, emergencies, nutrition, WASH, monitoring, financial management, supply chain management and administration. This number includes women workforce in administrative as well as at field and facilities level representing an improving gender balance over the years. MERF's leadership believes in delegating tasks to team members, which allows them to focus on improving workplace functions and productivity. MERF team is strongly committed to their work and follows strategic and sectoral need approaches.

MERF Team Over the Years	2018-19		2019-20		2020-21		2021-22		2022-23	
	Male	Female	Male	Female	Male	Female	Male	Female	Male	Female
Staff	412	196	827	349	956	371	1324	465	1803	863
Total	608		1176		1327		1789		2666	

THE LEADERSHIP



Dr. Syed Shah Miran
Chief Executive Officer



Sayed Ghalib
Director Operations



Khurram Awan
Director Health Programs



Faisal Riaz
Director Finance



Dr. Aurang Zeib
Emergency Response Coordinator



Tariq Mehr
Sr. Manager Grants, Compliance & Audits



Sardar Asad
Senior Manager-Logistics



Fozia Naeem
Senior Manager-HR

FINANCIAL PORTFOLIO

AUDIT REPORT 2022-23

MEDICAL EMERGENCY RESILIENCE FOUNDATION STATEMENT OF FINANCIAL POSITION AS AT JUNE 30, 2023

ASSETS	NOTE	2023 RUPEES	Restated 2022 RUPEES
Non-Current Assets			
Property, plant and equipment	6	26,251	449,782
Right-of-use-assets	7	11,107,602	17,943,050
		11,133,853	18,392,832
Current Assets			
Advances	8	4,733,414	3,328,326
Deposits, receivables and prepayments	9	566,027,837	404,584,289
Cash and bank	10	709,749,169	164,293,070
		1,280,510,420	572,205,685
TOTAL ASSETS		1,291,644,273	590,598,517
FUNDS AND LIABILITIES			
Funds			
Accumulated surplus	SCF	138,730,091	78,339,279
Restricted funds	11	500,920,764	234,470,286
		639,650,855	312,809,565
Non-Current Liabilities			
Deferred income	12	1	108,532
Lease liability	13	3,365,965	10,184,397
		3,365,966	10,292,929
Current Liabilities			
Current portion of lease liability	13	6,818,433	6,756,071
Trade and other payables	14	641,809,020	260,739,952
Provision for taxation	15	-	-
		648,627,453	267,496,023
TOTAL FUNDS AND LIABILITIES		1,291,644,273	590,598,517
Contingencies and Commitments	16	-	-

The annexed notes from 1 to 32 form an integral part of these financial statements.

CHIEF EXECUTIVE



DIRECTOR





**MEDICAL EMERGENCY RESILIENCE FOUNDATION
INCOME AND EXPENDITURE ACCOUNT
FOR THE YEAR ENDED JUNE 30, 2023**

PARTICULARS	NOTE	2023	Restated 2022
		RUPEES	RUPEES
INCOME			
Grants	17	3,484,733,071	1,609,327,078
Management fee	18	107,508,692	57,206,726
Other income	19	30,383,346	12,346,595
Amortized income	20	108,531	260,475
		3,622,733,640	1,679,140,874
EXPENDITURE			
Project expenses	21	(3,484,733,071)	(1,609,327,078)
Administrative and general expenses	22	(77,609,756)	(62,160,234)
		(3,562,342,827)	(1,671,487,312)
Operating surplus before taxation		60,390,812	7,653,562
Taxation	23	-	-
NET SURPLUS FOR THE YEAR		60,390,812	7,653,562

The annexed notes from 1 to 32 form an integral part of these financial statements.

CHIEF EXECUTIVE

DIRECTOR